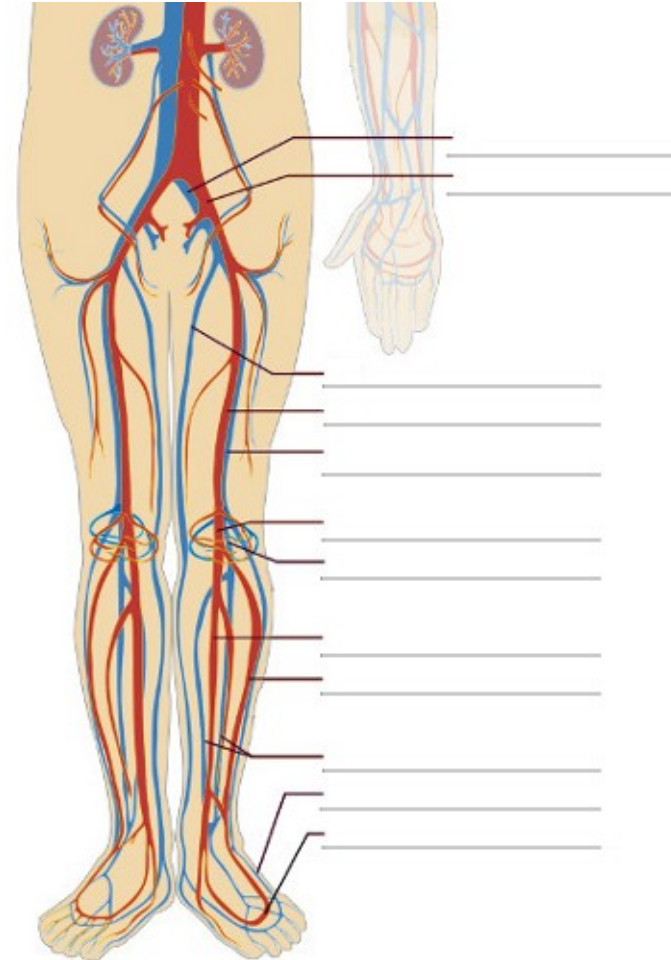
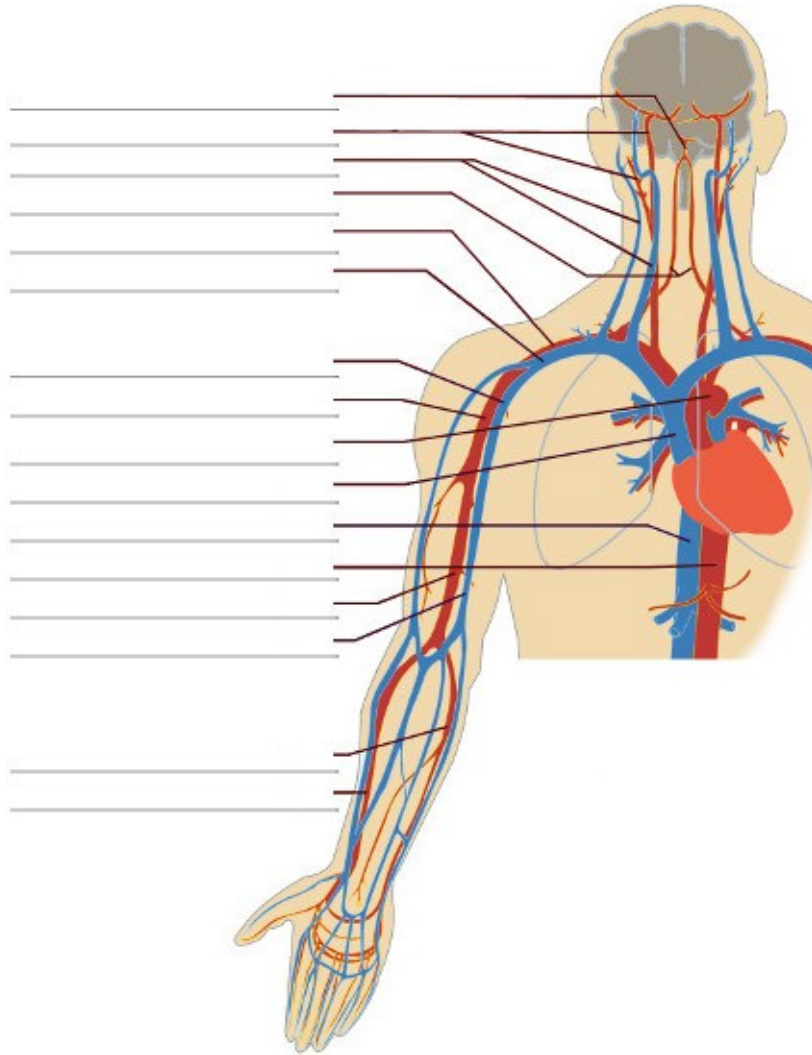


# The Circulatory System



**Practice:** Name the arteries and veins in the diagrams above, using the list below:

- |                 |                  |                     |                      |                  |                          |                                     |
|-----------------|------------------|---------------------|----------------------|------------------|--------------------------|-------------------------------------|
| Arcuate artery  | Basilar artery   | Common iliac artery | Femoral artery       | Jugular veins    | Subclavian artery        | Tibial artery (posterior)           |
| Axillary artery | Basilic vein     | Common iliac vein   | Femoral vein         | Popliteal artery | Subclavian vein          | Tibial veins (anterior & posterior) |
| Axillary vein   | Brachial artery  | Descending aorta    | Great saphenous vein | Popliteal vein   | Superior vena cava       | Ulnar artery                        |
| Ascending aorta | Carotid arteries | Dorsal venous arch  | Inferior vena cava   | Radial artery    | Tibial artery (anterior) | Vertebral arteries                  |