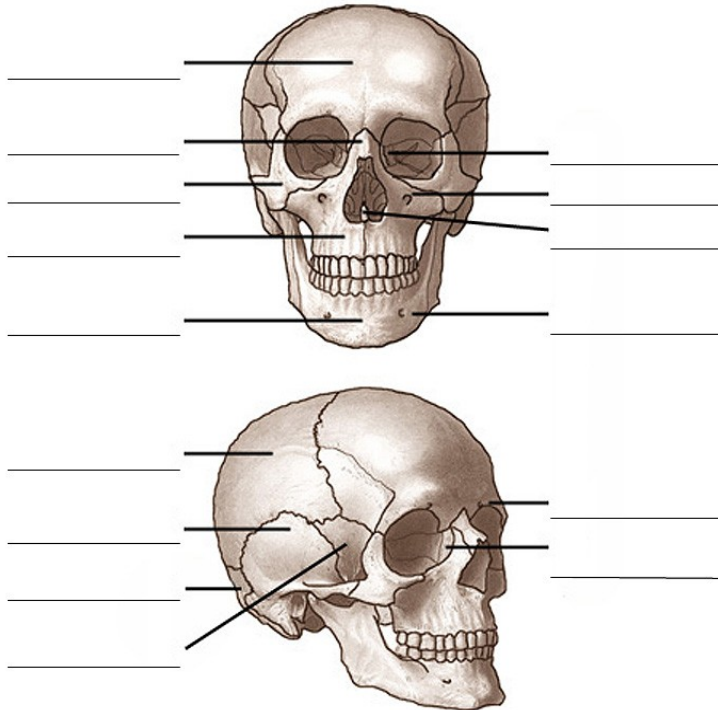


## The bones of the Axial Skeleton

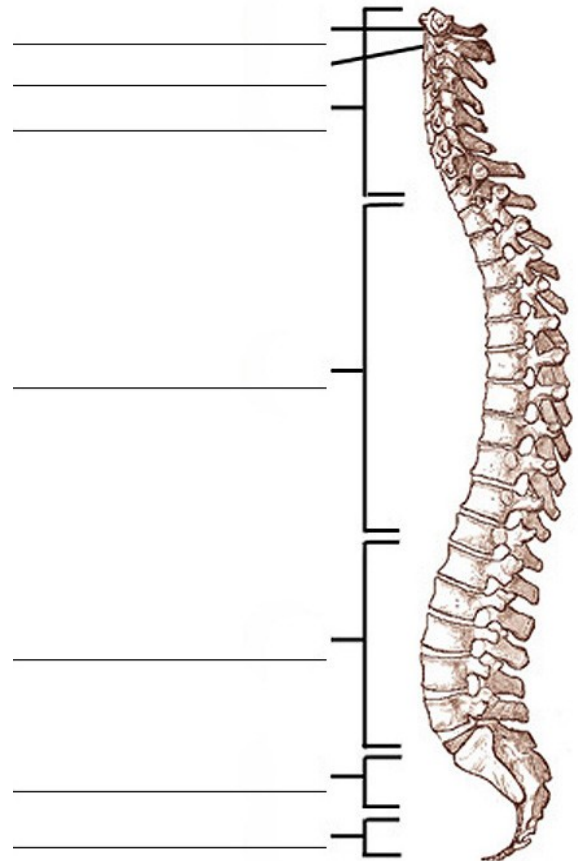
To help understand the function of the human skeleton, it is generally split into 2 sections: the axial skeleton, and the appendicular skeleton. The axial skeleton includes the bones of the skull, the spine, and the chest (the 'thorax'), and the appendicular skeleton covers all the other bones including those of the shoulders, arms, pelvic girdle and legs.

**Practice:** Name the bones of the axial skeleton in the diagrams below, using the list underneath.

The Skull



The Spine



**Choose from:**

- |                    |                      |                      |                    |
|--------------------|----------------------|----------------------|--------------------|
| Atlas              | Ethmoid bone         | Mandible             | Temperal bone      |
| Axis               | Nasal bone           | Maxilla              | Thoracic vertebrae |
| Cervical vertebrae | Infraorbital foramen | Occipital bone       | Vomer              |
| coccyx             | Lacrimal bone        | Sacrum               | Zygomatic bone     |
| Frontal bone       | Lumbar vertebrae     | Supraorbital foramen |                    |